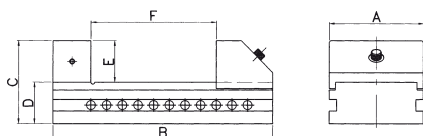
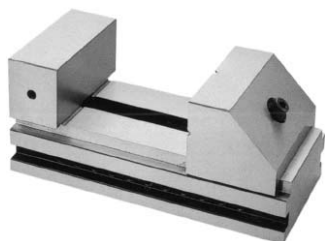


### HWH-A, Standardausführung HWH-A, general type



- Aus Legierungsstahl, wärmebehandelt, gehärtet auf HRC58 und feingeschliffen.
- Geeignet zum Einsatz auf Fräs- und Schleifmaschinen.

Auch als Kontrollschraubstock verwendbar.

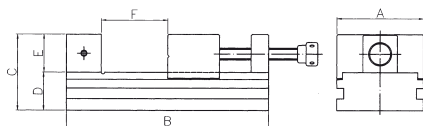
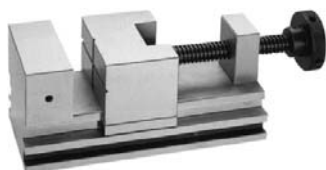
- Parallelität: 0,003mm/100mm
- Rechtwinkligkeit: 0,005mm/100mm

- Made of alloy steel processed by heat, subzero treatment for stress relief against distortion, hardened up to HRC58° and finished by grinding.

- This vice can be applied to milling and grinding machine. It also can be a reference for inspection.

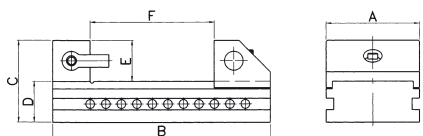
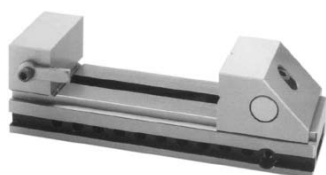
- Parallelism: within 0,003mm/100mm
- Squareness: within 0,005mm/100mm

Typ/ Type	A mm	B mm	C mm	D mm	E mm	F mm	Gewicht/ Weight kg		Art.-Nr./ Order no
A50	48	150	62	30	32	0-65	2	●	14-HWH-A50
A60	63	170	63	35	35	0-90	3	●	14-HWH-A60
A70	73	190	67	40	35	0-100	4	●	14-HWH-A70
A100	100	230	102	48	52	0-125	10	●	14-HWH-A100
A125	125	280	102	50	52	0-150	13	●	14-HWH-A125
A150	150	350	130	50	80	0-200	16	●	14-HWH-A150



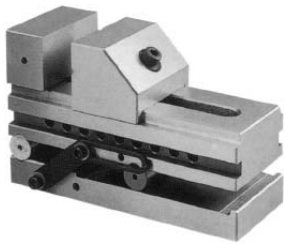
### HWH-B, mit Gewindespindel HWH-B, screw type

Typ/ Type	A mm	B mm	C mm	D mm	E mm	F mm	Gewicht/ Weight kg		Art.-Nr./ Order no
B50	45	150	62	30	32	0-80	3	●	14-HWH-B50
B60	63	180	72	35	37	0-100	4	●	14-HWH-B60
B70	73	190	82	40	42	0-110	6	●	14-HWH-B70
B100	100	230	102	48	52	0-120	12	●	14-HWH-B100



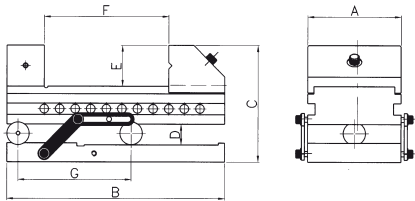
### HWH-C, lange Ausführung HWH-C, long type

Typ/ Type	A mm	B mm	C mm	D mm	E mm	F mm	Gewicht/ Weight kg		Art.-Nr./ Order no
C50	48	170	50	24	26	0-95	3	●	14-HWH-C50
C60	63	235	72	37	35	0-135	4	●	14-HWH-C60
C70	73	235	72	37	35	0-135	5	●	14-HWH-C70
C100	100	280	82	42	40	0-170	12	●	14-HWH-C100



**HWI-A, Standardausführung**  
**HWI-A, general type**

- Genaue Winkeleinstellung durch Endmaße.
  - Sichere Fixierung des Schraubstocks in jeder Winkeleinstellung.
  - Parallelität: 0,003mm/100mm
  - Rechtwinkligkeit: 0,005mm/100mm
- Accurate angle setting by gauge blocks.
  - The base has a positive locking device, which can provide a positive lock at any angle.
  - Parallelism: within 0,003mm/100mm
  - Squareness: within 0,005mm/100mm

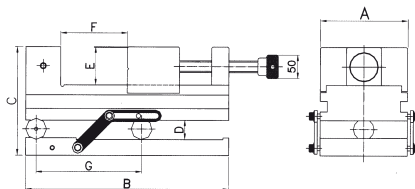


Typ/ Type	A mm	B mm	C mm	D mm	E mm	F mm	G ±0,005 mm	Gewicht/ Weight kg	Art.-Nr./ Order no
A60	63	180	90	0-45°	32	0-100	100	5	14-HWI-A60
A70	73	90	102	0-45°	36	0-100	100	9	14-HWI-A70



**HWI-B, mit Gewindespindel**  
**HWI-B, screw type**

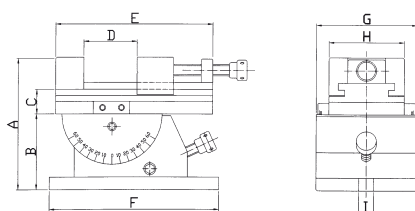
Typ/ Type	A mm	B mm	C mm	D mm	E mm	F mm	G ±0,005 mm	Gewicht/ Weight kg	Art.-Nr./ Order no
B60	63	180	99	0-45°	37	0-100	100	6	14-HWI-B60
B70	73	190	119	0-45°	42	0-100	100	10	14-HWI-B70



**HWH-UV**  
**HWH-UV**

- In 2 Ebenen verstellbar.
  - Parallelität: 0,005mm/100mm
  - Rechtwinkligkeit: 0,005mm/100mm
- Adjustable in 2 axes.
  - Parallelism: within 0,005mm/100mm
  - Squareness: within 0,005mm/100mm

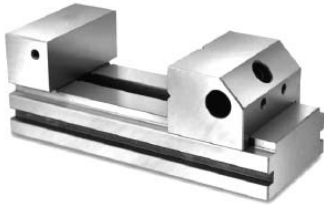
Typ/ Type	A mm	B mm	C mm	D mm	E mm	F mm	G mm	H mm	I mm	Gewicht/ Weight kg	Art.-Nr./ Order no
UV80	137	75	32	80	137	180	110	70	12,5	12	14-HWH-UV80



**Schleif- und Erodierschraubstock**  
*Grinding and erosion vice*



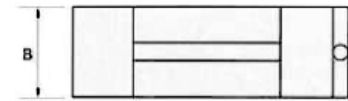
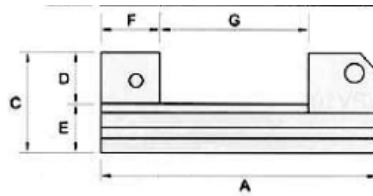
Abbildung/figure 1



Abbildung/figure 2

- Erodier-Schraubstock, geeignet für den Einsatz auf Erodier- und Schleifmaschinen für die präzise Bearbeitung von Werkstücken.
- Material: nichtrostender Chromstahl (50 - 55 HRC)
- Parallelität: 0,003 mm / 100 mm
- Rechtwinkligkeit: 0,003 mm / 100 mm
- Material GGG 55

- *This vice can be used on milling and grinding machines for high precision operations.*
- *Material: Stainless steel (50 - 55 HRC)*
- *Parallelism: 0,003 mm/100mm*
- *Squareness: 0,003 mm/100mm*
- *Material GGG 55*



Typ/ Type	Abbildung/ figure	A	B	C	D	E	F	G	kg	Art.-Nr./ Order no
SES-25 Mini	1	65	25	32	-	-	20	0-20	0,3	14-SES-25
SES-50	2	140	50	53	25	28	25	0-75	1,8	14-SES-50
SES-72	2	180	72	62	30	32	35	0-100	3,8	14-SES-72

**Hochpräzise Erodierschraubstöcke**  
*High-precision erosion vices*

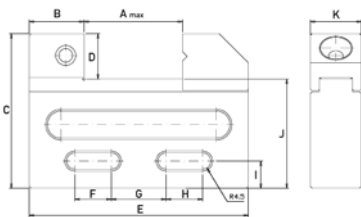


Abbildung/figure 1

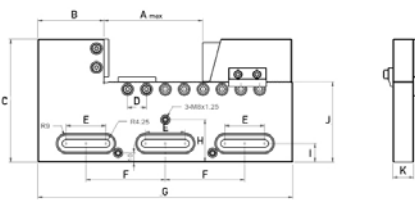


Abbildung/figure 2

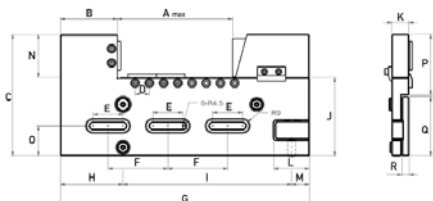
- hochgenauer Erodier-Schraubstock, geeignet zum Einsatz auf Erodiermaschinen
  - hohe Spannkraften garantieren stabile Positionierung der Werkstücke auch bei hohem Kühlwasserdruck
  - Material: nichtrostender Chromstahl HRC 45 - 55
  - Parallelität: 0,002 mm / 100 mm
  - Rechtwinkligkeit: 0,002 mm / 100 mm
  - Material GGG 55
- High precision vise, suitable for use on eroding machines
  - Material: stainless steel, hardened treatment up to HRC 40- 55
  - high clamping forces guarantee stable positioning of work piece even at high coolant pressure rates
  - Parallelism: 0,002 mm / 100 mm
  - Squareness: 0,002 mm / 100 mm
  - Material GGG 55



Abbildung/figure	A max.	B	C	D	E	F	G	H	I	J	K	kg	Art.-Nr./Order no
1	50	30	85	25	120	20	30	20	15	60	28	0,3	14-SESP-28/100



Abbildung/figure	A max.	B	C	D	E	F	G	H	I	J	K	kg	Art.-Nr./Order no
2	100	70	130	20	42	84	270	45	20	85	22	1,8	14-SESP-22/100
2	150	75	135	20	42	84	320	45	20	85	22	5,5	14-SESP-22/150

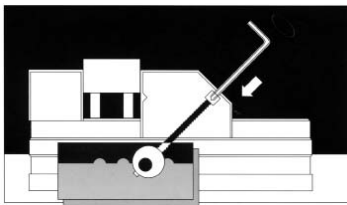


- im aufgespannten Zustand justierbar in 3 Achsen  
 - adjustable in 3 axes

Abbildung/figure	A max.	B	C	D	E	F	G	H	I	J	K	L	M	N	O	P	Q	R	kg	Art.-Nr./Order no
2	160	80	170	20	42	84	350	88	237	110	24	50	25	60	42	85	83	10	8	14-SESP-24/160

**Präzisions-Schleif- und Erodier-Schraubstöcke, rostfrei und säurebeständig**  
*High precision grinding and erosion vices, noncorrosive and acidproof*

**Säure- und rostbeständige Ausführung**  
*Acid-proof and corrosion-resistant design*



Größe/ Size	Backenbreite/ Jaw width mm	Backenhöhe/ Jaw height mm	Spannweite/ Opening mm	Art.-Nr./ Order no
0,5	32	16	43	83-SS0,5VA-032
0,75	40	20	55	83-SS0,75VA-040
1	50	25	60	83-SS1VA-050
2	63	30	75	83-SS2VA-063
3	80	40	100	83-SS3VA-080
4	100	50	140	83-SS4VA-100
5	125	50	140	83-SS5VA-125
6	100	50	215	83-SS6VA-100

**Kreuznuten, Prismenbacken, Sondereinsätze auf Anfrage lieferbar.**  
*Cross grooves, prism jaws, special inserts available on request.*



Watermunt 178  
 NL - 5931 TL Tegelen  
 T +31 (0)77 3260124

info@technotool.nl  
 www.technotool.nl  
 M +31(0) 6 2002 4242